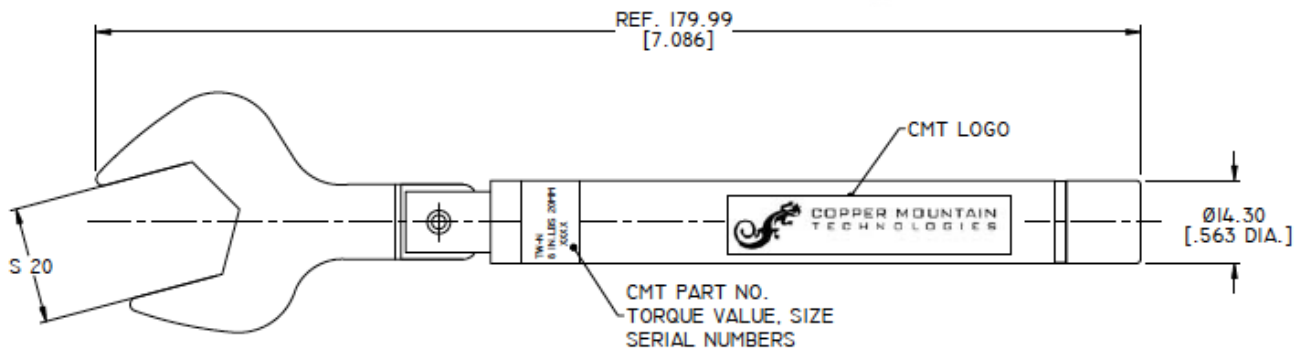


Torque Wrenches

TW-N N-Type Torque Wrench

The TW-N is an N-Type proof coupling torque wrench used to properly assemble or disassemble a wide range of coaxial connectors.



TW-S SMA-Type Torque Wrench

The TW-S is an SMA proof coupling torque wrench used to properly assemble or disassemble a wide range of coaxial connectors.

